



PennHIP is a not-for-profit veterinary health service at the University of Pennsylvania.

PennHIP is a multifaceted radiographic screening method for hip evaluation. The technique assesses the quality of the canine hip and quantitatively measures canine hip joint laxity. The PennHIP method of evaluation is more accurate than the current standard in its ability to predict the onset of osteoarthritis (OA). Osteoarthritis, also known as degenerative joint disease (DJD), is the hallmark of hip dysplasia (HD).

It can be performed on dogs at least 16 weeks of age and older.

Only individuals who have undergone training and quality control exercises may be certified to perform the PennHIP technique. In addition to the special radiographs developed by PennHIP, the method also incorporates the standard hip-extended view into the interpretation of hip joint integrity. Upon request, your PennHIP veterinarian can make a copy of the hip-extended radiograph for submission to the OFA at the time your dog has PennHIP radiography. You do not have to abandon the OFA view or schedule a separate appointment to have it done.

To obtain diagnostic radiographs, it is important that the patient and the surrounding musculature be completely relaxed. For the comfort and safety of the animal, this requires general anesthesia. Typically, three separate radiographs are made during an evaluation. The first is the compression view where the femurs are positioned in a neutral, stance-phase orientation and the femoral heads are pushed fully into the sockets. This helps show the true depth of the hip socket and gives an indication of the "fit" of the ball in the socket. The second radiograph is the distraction view. Again, the hips are positioned in a neutral orientation and a special positioning device is used to apply a harmless force to cause the hips to displace laterally. This position is the most accurate and sensitive for showing the degree of passive hip laxity. Passive hip laxity has been shown to be the primary risk factor associated with the development of DJD. A hip-extended view is also included for the sole purpose of examining for existing joint disease such

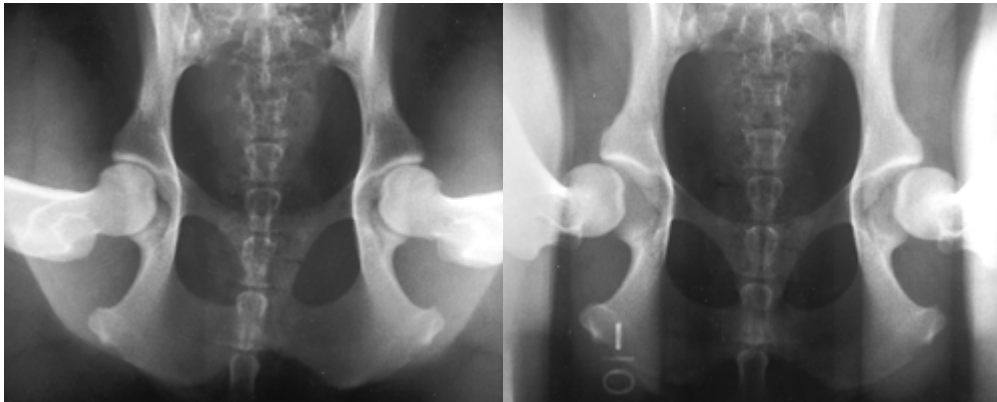
as osteoarthritis. The PennHIP procedure has been safely performed on thousands of patients.

At South Willamette Veterinary Clinic digital radiographs are used. This technique provides clearer and more defined radiographs, with the ability to manipulate the contrast of the image.

The costs involved in PennHip evaluation include pre-anesthetic blood screening, IV fluids, anesthesia, radiographs, PennHip fees and an extra CD if desired.

For more information you can visit the PennHIP website at:

www.pennhip.org



Compression View

Distraction View



Hip Extended View